

[2016-New Free Download Of GreatExam 70-413 Real Exam Questions (61-80)

GreatExam guarantees your Microsoft 70-413 exam 100% success with our unique official 70-413 exam questions resources! GreatExam's 70-413 braindumps are developed by experienced IT Certifications Professionals working in today's prospering companies and data centers! GreatExam 70-413 exam dumps are checked by our experts team every day to ensure you have the latest updated exam dumps!

QUESTION 61 You have a computer configured and need to take an image of it to use as the reference image for deployments. What type of boot image do you need to create to obtain the image? A. Preinstallation image B. Capture image C. Discover image D. Virtualization image
 Answer: B

QUESTION 62 You have configured a deployment and began the deployment to a client computer and want the client computer to boot from the hard drive after installation. Which command creates this configuration? A. wdsutil /set-client /bootdevice:hd B. sysprep /client-boot-reset:yes C. wdsutil /set-server /resetbootprogram:yes D. sysprep /set-client /primaryboot:hd
 Answer: C

QUESTION 63 You need to edit an image to change its configuration. The first step is to mount the image. What tool would you use? A. Deployment Image Servicing and Management (DISM) B. Windows Deployment Services (WDS) C. Windows Image Administration D. Advanced Image Kit (AIK)
 Answer: A

QUESTION 64 When WDS and DHCP operate on the same server, which DHCP option needs to be configured for WDS? A. Option 31 B. Option 60 C. Boot Option 4 D. WDS Server Option
 Answer: B

QUESTION 65 Two modes of operation are available when deploying WDS. Which of the following are not included in those modes? (Choose two.) A. Deployment B. Image Response C. Transport D. Capture
 Answer: B D
 Explanation: Deployment and Transport are included as WDS modes, question asks which are not.

QUESTION 66 Your network contains an Active Directory forest named contoso.com. You plan to deploy 200 new physical servers during the next 12 months by using Windows Deployment Services (WDS). You identify four server builds for the 200 servers as shown in the following table. You need to recommend the minimum number of images that must be created for the planned deployment. How many images should you recommend?

Build name	Configuration
File Servers	<ul style="list-style-type: none"> Full Installation of Windows Server 2012 Distributed File System service
Web Servers	<ul style="list-style-type: none"> Server Core Installation of Windows Server 2012 Web Server (IIS) service
Domain Controllers	<ul style="list-style-type: none"> Full Installation of Windows Server 2012 DNS Server server role
Networking Servers	<ul style="list-style-type: none"> Server Core Installation of Windows Server 2012 DHCP Server server role WINS Server server role

A. 1 B. 2 C. 3 D. 4
 Answer: A
 Explanation: <http://technet.microsoft.com/en-us/library/hh831764.aspx>

QUESTION 67 Your network contains three servers named Server1, Server2, and Server3 that run Windows Server 2012. Server3 is connected to a disk storage array. You need to ensure that Server1 can store files on the storage array. The solution must ensure that Server1 can access the storage as a local disk. What should you configure on each server? To answer, drag the appropriate configuration to the correct location in the answer area. Each configuration may be used once, more than once, or not at all. Additionally, you may need to drag the split bar between panes or scroll to view content.

The screenshot shows a 'Configurations' pane on the left with the following items:

- the iSCSI Initiator Service
- the iSCSI Target Server role service
- the iSNS Server service feature
- the Server for NFS role service

The 'Answer Area' on the right has two server slots:

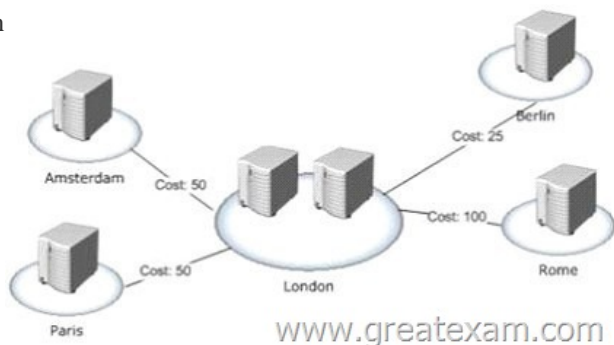
- Server1: Configuration
- Server3: Configuration

Answer:

The screenshot shows the 'Configurations' pane with the same four items as above. In the 'Answer Area', the following configurations are placed:

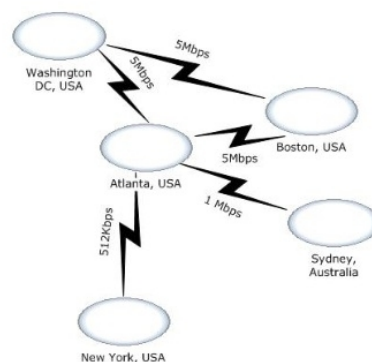
- Server1: the iSCSI Initiator Service
- Server3: the iSCSI Target Server role service

QUESTION 68Your company has a main office and four branch offices. The main office is located in London. The network contains an Active Directory domain named contoso.com. Each office contains one domain controller that runs Windows Server 2012. The Active Directory site topology is configured as shown in the exhibit. (Click the Exhibit button.)You discover that when a domain controller in a branch office is offline for maintenance, users in that branch office are authenticated by using the domain controllers in any of the sites. You need to recommend changes to Active Directory to ensure that when a domain controller in a branch office is offline, the users in that branch office are authenticated by the domain controllers in London. What should you include in the recommendation



A. Modify the site link costs. B. Modify the DC Locator DNS Records settings. C. Disable site link bridging. D. Modify the service location (SRV) records in DNS. Answer: B
Explanation: After having read several articles on the subject, I would say the correct answer for this question would be modifying the DC locator DNS record. Though I have never used it in any environment I worked in. But I am not sure. If anyone can clarify this one, mail me at badmuts13(a)gmail.com

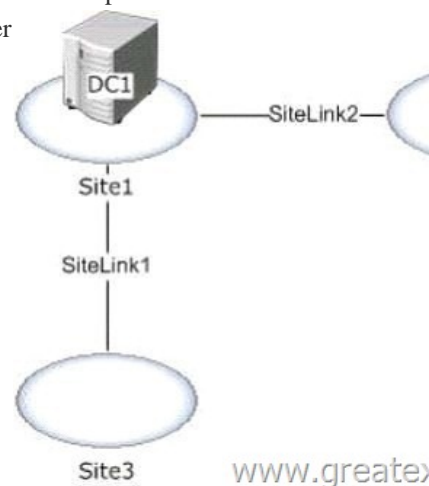
QUESTION 69Your network contains an Active Directory domain named contoso.com. The physical topology of the network is configured as shown in the exhibit. (Click the Exhibit button.) Each office contains 500 employees. You plan to deploy several domain controllers to each office. You need to recommend a site topology for the planned deployment. What should you include in the recommendation? More than one answer choice may achieve the goal. Select the BEST answer



A. Five sites and three site links B. Five sites and one site link C. Three sites and three site links D. One site Answer: A
Explanation: <http://technet.microsoft.com/en-us/library/cc960573.aspx> Create a site for each LAN, or set of LANs, that are connected by a high speed backbone, and assign the site a name. Connectivity within the site must be reliable and always available. This would mean 5 sites Site links are transitive, so if site A is connected to site B, and site B is connected to site C, then the KCC assumes that domain controllers in site A can communicate with domain controllers in site C. You only need to create a site link between site A and site C if there is in fact a distinct network connection between those two sites. This would mean 3 site links. So answer is "Five sites and three site links"

QUESTION 70Your company has a main office and a branch office. The main office contains 2,000 users. The branch office contains 800 users. Each office contains three IP subnets. The company plans to deploy an Active Directory forest. You need to recommend an Active Directory infrastructure to meet the following requirements:- Ensure that the users are authenticated by using a domain controller in their respective office. - Minimize the amount of Active Directory

replication traffic between the offices. Which Active Directory infrastructure should you recommend? More than one answer choice may achieve the goal. Select the BEST answer. A. Two domains and one site B. Two domains and two sites C. One domain and two sites D. One domain and six sites
 Answer: B
 Explanation: To minimize the amount of replication traffic, create 2 domains. Each domain contain one site. <http://technet.microsoft.com/en-us/library/bb742457.aspx>
QUESTION 71 Your network contains an Active Directory domain named contoso.com. The Active Directory site topology is configured as shown in the exhibit. (Click the Exhibit button.) DC1 and DC2 run Windows Server 2003 R2. All FSMO roles are located on DC2. You plan to deploy a read-only domain controller (RODC) to Site3. You need to recommend changes to the network to support the planned RODC implementation. What should you recommend? More than one answer choice may achieve the goal. Select the BEST answer



A. To Site1, add an RODC that runs Windows Server 2012. B. Replace DC2 with a domain controller that runs Windows Server 2012. C. To Site2, add an RODC that runs Windows Server 2012. D. Replace DC1 with a domain controller that runs Windows Server 2012.
 Answer: D
 Explanation: <http://technet.microsoft.com/en-us/library/cc772065%28v=ws.10%29.aspx> Each RODC requires a writable domain controller running Windows Server 2008 for the same domain from which the RODC can directly replicate. Typically, this requires that a writable domain controller running Windows Server 2008 be placed in the nearest site in the topology.
QUESTION 72 Your network contains a Hyper-V host named Host1 that runs Windows Server 2012. Host1 contains a virtual machine named DC1. DC1 is a domain controller that runs Windows Server 2012. You plan to clone DC1. You need to recommend which steps are required to prepare DC1 to be cloned. What should you include in the recommendation? (Each correct answer presents part of the solution. Choose all that apply.) A. Run sysprep.exe /oobe. B. Run New-VirtualDiskClone. C. Create a file named Dccloneconfig.xml. D. Add DC1 to the Cloneable Domain Controllers group. E. Run dcpromo.exe /adv.
 Answer: CDE
 Explanation:

<http://blogs.technet.com/b/askpfplat/archive/2012/10/01/virtual-domain-controller-cloning-in-windowsserver-2012.aspx>
 DCCloneConfig.xml is an XML configuration file that contains all of the settings the cloned DC will take when it boots. This includes network settings, DNS, WINS, AD site name, new DC name and more. This file can be generated in a few different ways. There's a new group in town. It's called Cloneable Domain Controllers and you can find it in the Users container. Membership in this group dictates whether a DC can or cannot be cloned. This group has some permissions set on the domain head that should not be removed. Removing these permissions will cause cloning to fail. Also, as a best practice, DCs shouldn't be added to the group until you plan to clone and DCs should be removed from the group once cloning is complete. Cloned DCs will also end up in the Cloneable Domain Controllers group. Make sure to remove those as well
QUESTION 73 Your network contains an Active Directory domain named contoso.com. Your company plans to open a branch office. The branch office will have 10 client computers that run Windows 8 and at least one server that runs Windows Server 2012. The server will host BranchCache files and manage print queues for the network print devices in the branch office. You need to recommend a solution to ensure that the users in the branch office can print if the branch office server fails. What should you recommend? More than one answer choice may achieve the goal. Select the BEST answer. A. Printer pooling B. Branch Office Direct Printing C. A standby print server D. A print server cluster E. A secure Web Services on Devices (WSD) printer
 Answer: B
 Explanation: <http://technet.microsoft.com/en-us/library/jj134156.aspx>
 Branch Office Direct Printing can reduce Wide Area Network (WAN) usage by printing directly to a print device instead of a server print queue. This feature can be enabled or disabled on a per printer basis and is transparent to the user. This feature requires a print server running Windows Server 2012 and clients running Windows 8. It is enabled by an administrator using the Print Management Console or Windows PowerShell on the server.
QUESTION 74 Your company has a main office that contains several servers and

several users. The main office contains a file server named Server1 that runs Windows Server 2012. The users access a large report file that is created on Server1 each day. The company plans to open a new branch office. The branch office will contain only client computers. You need to implement a solution to reduce the amount of bandwidth used by the client computers in the branch office to download the report each day. What should you do? More than one answer choice may achieve the goal. Select the BEST answer. A.

Install the BranchCache for network files role service on Server1. Configure the client computers to use BranchCache in hosted cache mode.B. Configure the offline settings of the shared folder that contains the report.C. Install the BranchCache for network files role service on Server1. Configure the client computers to use Branchcache in distributed mode.D. Enable the Background Intelligent Transfer Service (BITS) feature on Server1 and on each client computer in the branch office. Move the report to a web folder. Answer: CExplanation: [http://technet.microsoft.com/library/ee649232\(WS.10\).aspx](http://technet.microsoft.com/library/ee649232(WS.10).aspx)Distributed cache mode. In this mode,

branch office client computers download content from the content servers in the main office and then cache the content for other computers in the same branch office.Distributed cache mode does not require a server computer in the branch office. QUESTION 75 Your company has a main office and a branch office.The network contains an Active Directory domain named contoso.com. The domain contains three domain controllers. The domain controllers are configured as shown in the following table.

Domain controller name	Location
DC1	Main office
DC2	Main office
RODC1	Branch office

The domain contains two global groups. The groups are configured as shown in the following table.

Group name	Description
Helpdesk	Supports users throughout the c
Branch1Users	Contains users that work in the b

You need to ensure that the RODC is configured to meet the following requirements:- Cache passwords for all of the members of Branch1Users.- Prevent the caching of passwords for the members of Helpdesk.What should you do? A. Modify the membership of the Denied RODC Password Replication group.B. Install the BranchCache feature on RODC1.C. Modify the delegation settings of RODC1.D. Create a Password Settings object (PSO) for the Helpdesk group. Answer: A QUESTION 76Your network contains an Active Directory domain named contoso.com. You deploy several servers that have the Remote Desktop Session Host role service installed. You have two organizational units (OUs).The OUs are configured as shown in the following table.GPO1 contains the Folder Redirection settings for all of the users. You need to recommend a solution to prevent the sales users' folders from being redirected when the users log on to a Remote Desktop session.What should you include in the recommendation?

OU name	Description
OU1	
OU2	

A. From GPO2, set the loopback processing mode.B. Apply a WMI filter to GP02.C. Configure security filtering for GPO1.D. From GPO1, set the loopback processing mode. Answer: AExplanation:Group Policy applies to the user or computer in a manner that depends on where both the user and the computer objects are located in Active Directory. However, in some cases, users may need policy applied to them based on the location of the computer object alone. You can use the Group Policy loopback feature to apply Group Policy Objects (GPOs) that depend only on which computer the user logs on to.

<https://support.microsoft.com/en-us/kb/231287> QUESTION 77Your network contains an Active Directory domain named contoso.com. The functional level of the domain and the forest is Windows Server 2008 R2. All domain controllers run Windows Server 2008 R2. You plan to deploy a new line-of-business application named App1 that uses claims-based authentication. You need to recommend changes to the network to ensure that Active Directory can provide claims for App1. What should you include in the recommendation? (Each correct answer presents part of the solution. Choose all that apply.) A. Deploy Active Directory Lightweight Directory Services (AD LDS).B. From the Default Domain Controllers Policy, enable the Support for Dynamic Access Control and Kerberos armoring setting.C. From the properties of the computer accounts of the domain controllers, enable Kerberos constrained delegation.D. Raise the domain functional level to Windows Server 2012.E. Add domain controllers that run Windows Server 2012. Answer: BEEExplanation:E: You must perform several steps to enable claims in Server 2012 AD. First, you must upgrade the forest schema to Server 2012. You can do so manually through Adprep, but Microsoft strongly recommends that you add the AD DS role to a new Server 2012 server or upgrade an existing DC to Server 2012.B: Once AD can support claims, you must enable them through Group Policy:From the Start screen on a system with AD admin rights, open Group Policy Management and select the Domain Controllers Organizational Unit (OU) in the domain in which you wish to enable claims.

Right-click the Default Domain Controllers Policy and select Edit. In the Editor window, drill down to Computer Configuration, Policies, Administrative Templates, System, and KDC (Key Distribution Center). Open KDC support for claims, compound authentication, and Kerberos armoring. Select the Enabled radio button. Supported will appear under Claims, compound authentication for Dynamic Access Control and Kerberos armoring options

<http://windowsitpro.com/windows-server-2012/enable-claims-support-windows-server-2012-active-directory> QUESTION 78 Your company has two divisions named Division1 and Division2. The network contains an Active Directory domain named contoso.com. The domain contains two child domains named division1.contoso.com and division2.contoso.com. The company sells division1 to another company. You need to prevent administrators in contoso.com and division2.contoso.com from gaining administrative access to the resources in division1.contoso.com. What should you recommend? A. Create a new tree in the forest named contoso.secure. Migrate the resources and the accounts in division1.contoso.com to contoso.secure. B. On the domain controller accounts in division1.contoso.com, deny the Enterprise Admins group the Allowed to Authenticate permission. C. Create a new forest and migrate the resources and the accounts in division1.contoso.com to the new forest. D. In division1.contoso.com, remove the Enterprise Admins group from the Domain Admins group and remove the Enterprise Admins group from the access control list (ACL) on the division1.contoso.com domain object. Answer: C QUESTION 79 Your network contains an Active Directory domain named contoso.com. The domain contains three Active Directory sites. The Active Directory sites are configured as shown in the following table

Site name	Location
Site1	New York
Site2	Vancouver
Site3	Beijing

The sites connect to each other by using the site links shown in the following table

Site link name	Connected sites
Link1	Site1 and Site2
Link2	Site2 and Site3
Link3	Site1 and Site3

You need to design the Active Directory site topology to meet the following requirements:- Ensure that all replication traffic between Site2 and Site3 replicates through Site1 if a domain controller in Site1 is available.- Ensure that the domain controllers between Site2 and Site3 can replicate if all of the domain controllers in Site1 are unavailable. What should you do? A. Delete Link1. B. Delete Link2. C. Delete Link3. D. Disable site link bridging. E. Create one site link bridge. F. Modify the cost of Link2. G. Create one SMTP site link between Site2 and Site3. H. Create one SMTP site link between Site1 and Site3. Create one SMTP site link between Site1 and Site2. Answer: F Explanation: The cost setting on a site link object determines the likelihood that replication occurs over a particular route between two sites. Replication routes with the lowest cumulative cost are preferred.

[https://technet.microsoft.com/en-us/library/cc794882\(v=ws.10\).aspx](https://technet.microsoft.com/en-us/library/cc794882(v=ws.10).aspx) QUESTION 80 Your network contains an Active Directory forest. The forest contains two Active Directory domains named contoso.com and child.contoso.com. The forest functional level is Windows Server 2003. The functional level of both domains is Windows Server 2008. The forest contains three domain controllers. The domain controllers are configured as shown in the following table

Domain controller name	Domain	Operations master role
DC1	Contoso.com	Schema master Domain naming master
DC2	Contoso.com	PDC emulator Infrastructure master RID master
DC3	Child.contoso.com	PDC emulator Infrastructure master RID master

DC1 and DC2 have the DNS Server server role installed and are authoritative for both contoso.com and child.contoso.com. The child.contoso.com domain contains a server named server1.child.contoso.com that runs Windows Server 2012. You plan to deploy server1.child.contoso.com as a read-only domain controller (RODC). You run the adprep.exe /rodcrep command on DC3 and receive the following error message

```

Adprep could not contact a replica for partition DC=DomainDnsZones,DC=Contoso,DC=com
Adprep failed the operation on partition DC=DomainDnsZones,DC=Contoso,DC=com Skipping to next partition.

Adprep could not contact a replica for partition DC=ForestDnsZones,DC=Contoso,DC=com
Adprep encountered an LDAP error. Error code: 0x0. Server extended error code: 0x0, Server error message: (null).

Adprep failed the operation on partition DC=ForestDnsZones,DC=Contoso,DC=com Skipping to next partition.

Adprep completed with errors. Not all partitions are updated."
    
```

You need to identify what prevents you from successfully running Adprep /rodcrep on DC3. What should you identify? A. The domain functional level of child.contoso.com is set to the wrong level. B. DC3 cannot connect to the infrastructure master on DC2. C. DC3 cannot connect to the domain naming master on DC1. D. The forest functional level is set to the wrong level. Answer: B
Explanation: Adprep could not contact a replica... This problem occurs when the Adprep /rodcrep command tries to contact the infrastructure master for each application partition in the forest. <https://support.microsoft.com/en-us/kb/949257> By utilizing GreatExam high quality Microsoft 70-413 exam dumps products, you can surely pass 70-413 certification exam 100%! GreatExam also offers 100% money back guarantee to individuals in case they fail to pass Microsoft 70-413 in one attempt. <http://www.greatexam.com/70-413-exam-questions.html>